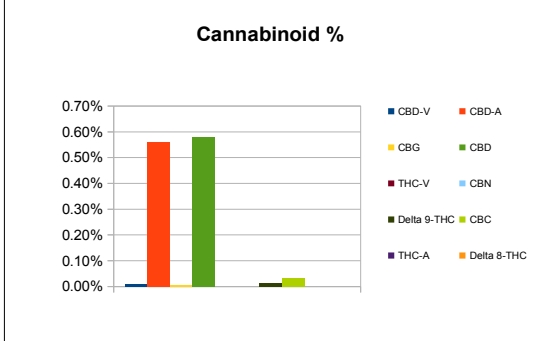



Sample Information		
Sample Identification	1200mg Lotion	
Laboratory Number	2019011539	
Batch Number	NA	
Matrix	Topical	
Analyzed Date	05/23/19	
Extraction Date	05/23/19	
Cannabinoid (HPLC)	%	mg/g
Compound		
CBD-V	0.01%	0.09
CBD-A	0.56%	5.61
CBG	0.01%	0.05
CBD	0.58%	5.81
THC-V	ND	ND
CBN	ND	ND
Delta 9-THC	0.02%	0.15
CBC	0.03%	0.33
THC-A	ND	ND
Delta 8-THC	ND	ND
Cannabinoids Total		
Max Active THC	0.02%	0.15
Max Active CBD	1.07%	10.75
T. Active Cannabinoids	0.64%	6.43
Total Cannabinoids	1.20%	12.04

Max Active Ratios		
	71.3:1 CBD to THC	
	0.0:1 THC to CBD	



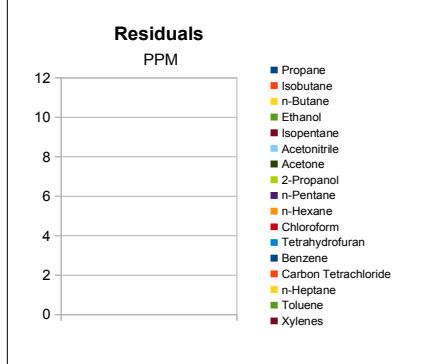
Sample Image



Micro Visual: NOT TESTED

Percent Moisture: Not Tested

RS (GCMS-HS)	PPM	RL
Compound		
Propane	NT	5.0
isobutane	NT	5.0
n-Butane	NT	5.0
Ethanol	NT	5.0
Isopentane	NT	5.0
Acetonitrile	NT	5.0
Acetone	NT	50.0
2-Propanol	NT	5.0
n-Pentane	NT	5.0
n-Hexane	NT	5.0
Chloroform	NT	5.0
Tetrahydrofuran	NT	5.0
Benzene	NT	5.0
Carbon Tetrachloride	NT	5.0
n-Heptane	NT	5.0
Toluene	NT	5.0
Xylenes	NT	10.0



g/topical	113.4
mg THC/topical	17.09
mg CBD/topical	658.73
(mg) total cannabinoids/topical	1365.8

Metals	PPM	RL
Compound		
Lead	NT	0.010
Arsenic	NT	0.010
Cadmium	NT	0.010
Mercury	NT	0.001

RL=Reporting Limit
NA=Not Applicable
NT=Not Tested
ND=Non Detected



Terpene (GC-MS)	%	mg/g
Compound		
alpha-Pinene	NT	NT
Camphene	NT	NT
Sabinene	NT	NT
beta-Myrcene	NT	NT
Beta-Pinene	NT	NT
p-mentha-1-5-diene	NT	NT
(1S)-(+)-3-Carene	NT	NT
Alpha-Terpinene	NT	NT
Ocimene Isomer 1	NT	NT
(R)-(+)-Limonene	NT	NT
Ocimene Isomer2	NT	NT
Eucalyptol (1,8-Cineole)	NT	NT
gamma-Terpinene	NT	NT
Sabinene Hydrate	NT	NT
Terpinolene	NT	NT
Linalool	NT	NT
(+)-Fenchone and L(-)-Fenchone	NT	NT
1R)-Endo-(+)-Fenchyl	NT	NT
(-)-Isopulegol	NT	NT
Camphor	NT	NT
Isoborneol	NT	NT
Hexahydrothymol	NT	NT
(+)-Borneol and (-) Borneol	NT	NT
alpha-Terpineol	NT	NT
gamma-Terpineol	NT	NT
Nerol	NT	NT
Geraniol	NT	NT
(+) -Pulegone	NT	NT
Geranyl Acetate	NT	NT
alpha-Cedrene	NT	NT
trans- Caryophyllene	NT	NT
alpha-Humulene	NT	NT
Valencene	NT	NT
cis-Nerolidol	NT	NT
trans-Nerolidol	NT	NT
Guaiol	NT	NT
(-)-Caryophyllene Oxide	NT	NT
(+)-Cedrol	NT	NT
(-)-alpha-Bisabolol	NT	NT
Total Terpenes	NT	NT

